

Presenting Hundreds  
of New Exploration  
Targets in the Yukon

# Yukon Mineral Targets

[METHODS \(/\)](#)[ANALYSIS \(/\)](#)[TECHNOLOGY \(/\)](#)[DOWNLOADS \(/DOWNLOADS\)](#)

Identified from Stream Sediment Sampling Programs

INTELLIGENCE

Matched to Deposit Types with TARGET using Geochemistry, Geology, Terrane Setting, and Structure

[ABOUT \(HTTPS://MINERVAINTELLIGENCE.COM/ABOUT-US/\)](https://minervaintelligence.com/about-us/)



(L)

## Introduction

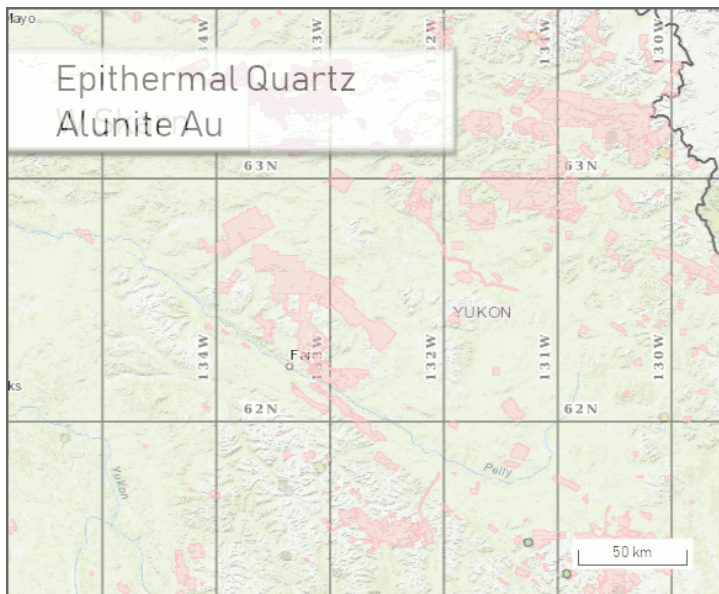
Generating good new mineral exploration targets is a difficult task, requiring the consideration of many variables.

This website presents exploration targets, many of them new, which have been derived from the extensive geochemical sampling programs conducted in the Yukon by the [Geological Survey of Canada](http://www.geology.gov.yk.ca/publications.html) (<http://www.geology.gov.yk.ca/publications.html>)

A special feature of these targets is that each one has been evaluated using Minerva's AI platform, which compares them with their best-matching mineral deposit models, and provides guidance, available on the site, as to what information should be sought when conducting follow-up work on each target.

Yukon Mineral Targets - Explanation and Walkt...





- **How We Develop the Maps (/targets/how-we-develop-maps)** - This section walks through Minerva's process of creating prospectivity maps
- **Interpreting the Maps (/targets/interpreting-maps)** - This section provides guidelines on how to use the maps presented on this website. It provides a walkthrough on the functionality and links to each analysis section to further explain our processing and handling of input data.
- **Targets (<http://www.yukonmineraltargets.com/targets>)** - This section explains what a target is, where the data comes from, and how our software adds value to each target.

**Explore Targets & Maps (/target-maps)**

## Analysis

Geochemistry

Geology

Terranes

Structure

Mineral Occurrences

24,546 samples were analysed statistically for 53 elements and levelled as a function of the lithology over which the sample was collected.

**Explore Geochemistry Statistics > (/analysis/geochemistry)**

# TARGET

TARGET records the type of match recognised between each pair of target and deposit model attributes.

This assists the reader of the report to understand TARGET's reasoning, and it allows TARGET to adjust its similarity scores according to the strength or weakness of the match.

| Polymetallic replacement: Property, Value, Freq |  |         |
|---|--|---------|
| Deposit   | deposit_Polymetallic replacement - deposit                               | presen  |
| Has Age   | http://resource.geosciml.org/classifier/ics/ischart/ Mesozoic-Mesozoic - | sometim |
| Has Element Mzn Enhanced                        | element_27 - Ag  | sometim |
| Has Element Mzn Enhanced                        | element_28 - Bi  | sometim |
| Has Element Mzn Enhanced                        | element_29 - Zn  | sometim |
|   |  |         |
| Has Mineralization                              | minassemblage_3 - Mineralization   | sometim |
| Has Weathering                                  | weathassemblage_1 - Weathering   | sometim |
| Has Mineralization                              | minassemblage_1 - Mineralization   | sometim |
| Has Mineralization                              | minassemblage_2 - Mineralization   | sometim |
| Has Zone Out                                    | zoneout_1 - Zone Out   | sometim |
| Has Zone Out                                    | zoneout_2 - Zone Out   | sometim |

(/the-matcher)

Learn More (/the-matcher)



(<https://minervaintelligence.com>)

[in \(https://ca.linkedin.com/company/minerva-intelligence-inc\)](https://ca.linkedin.com/company/minerva-intelligence-inc)



(<https://www.youtube.com/channel/UCIBdwe1WeEHLKlwVx7Gc0tg>)



([https://twitter.com/minerva\\_intel](https://twitter.com/minerva_intel))

© 2020 Minerva Intelligence | Legal

| TARGETS  | ANALYSIS                              | TECHNOLOGY  | DOWNLOADS (/DOWNLOADS)                   |
|--|---------------------------------------|---|--|
| How We Develop The Maps (/targets/how-we-develop-maps) | Geochemistry (/analysis/geochemistry) | TARGET (/the-matcher)                               | ABOUT (HTTPS://MINERUS/)                 |
| Interpreting the Maps (/targets/interpreting-maps)     | Geology (/analysis/geology)           | Terranes (/analysis/terranes)                       | NEWS (HTTP://MINERUS/)                   |
| Targets (/targets)                                     | Structure (/analysis/structure)       | Mineral Occurrences (/analysis/mineral-occurrences) | CONTACT (HTTPS://MINERUS/)               |
| Target Maps (/target-maps)                             |                                       |   | PRIVACY POLICY (HTTPS://MINERUS/POLICY/) |
|  |                                       |   | TERMS OF USE (HTTPS://MINERUS/OF-USE/)   |
|  |                                       |   | SITEMAP (/SITEMAP)                       |